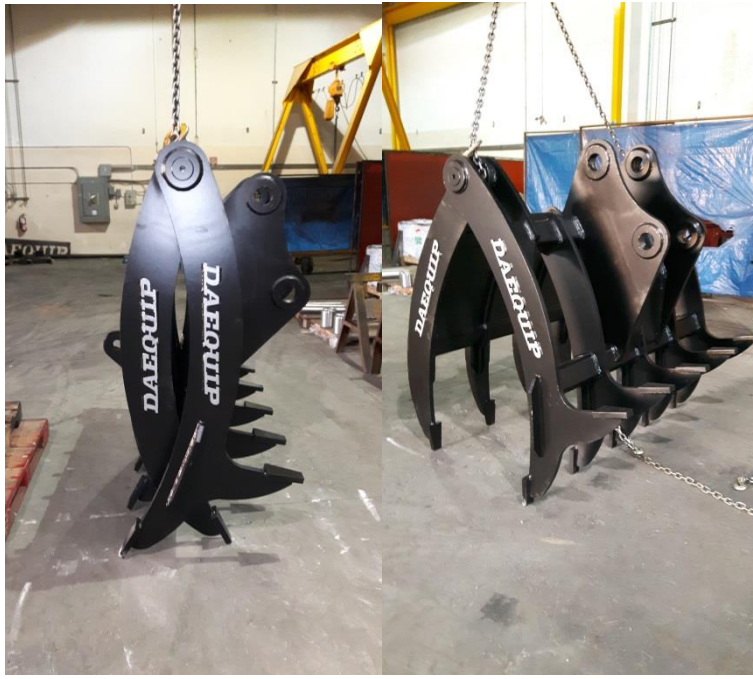


# ***DAEQUIP***

**PREMIUM EQUIPMENT ATTACHMENTS**

***"DESIGNED TO WORK, BUILT TO LAST"***

## ***XD Clearing Grapple***



### **FEATURES:**

- Rugged Versatile Design:  
*Handles all but the most specialized grapping jobs.*
- Reinforced Fabrication:  
*Results in the strongest possible grapples*
- Solid Tines *For maximum strength and longer life.*
- 4 Position Solid Stiff Arm and Mounting Plate:  
*Allows operator to fine tune fixed side position for optimum handling and production*
- Hardened pins and bushings
- Rear Kicks for backraking

**[www.daequip.com](http://www.daequip.com)**

**18945-96<sup>th</sup> ave**

**Surrey, BC**

**V4N3P3**

**1-844-882-8008---604-882-8008**